



Thirsk Community Primary School

Welcome back

I hope everyone had a great half term and were able to benefit from the unseasonably warm weather!!

World book day

Yesterday was world book day, during the day classes took part in a number of different activities including reading with children from different classes and a huge book swap in the school hall. Thank you for your donations of books that made this possible.

Mobile Phones

Over the last few weeks we have a number of pupils that have brought mobile phones to school with them. Can I please stress that **pupils are not to bring Mobile Phones to school**. If your child does bring their phone to school we will contact parents to come and collect it at the end of the school day.

Being punctual for school

Well done to everyone that arrives on time for school each day, however as you can see below we are keeping a record of how much time is lost to lateness. Last week over 7 hours of teaching time was missed due to pupils arriving late –please help us to reduce this.

March 2019

- 11th Open Book Assembly
- 12th Rural Art Work shop
3/4H
Family Learning
Mark Jobling cricket Yr1/2
- 13th 3/4H & 3/4W Swimming
Sing up Day
- 14th Author Visit to Yr 3-4
Family Learning
Hi 5 Competition
- 15th EYFS Pop-up Library
- 18-20th Book Fair
- 21st Family Learning
- 22nd 1L Class Assembly

Minutes Late This Week

This week we have lost **465** Minutes in lateness.

Please arrive from 8.40am to ensure your child can be settled and ready to begin lessons on time.

Attendance

Class	% attendance this week (all pupils)
RB	93.9
RM	97
1L	95
1/2S	96.7
2C	95
3/4A	92
3/4H	97
3/4W	94
5BC	95
6T	94
6P	97.7
Total	95.4

EVERY SCHOOL DAY COUNTS

0 days off school	100%	Perfection
Equates to 2 days off school each year	99%	Excellent
Equates to 5 days off school each year	97%	Good
Equates to 10 days off school each year	95%	Slight Concern
Equates to 20 days off school each year	90%	Concerned
Equates to 30 days off school each year	85%	Very Concerned

Every Minute Counts

LATENESS = LOST LEARNING

(Figures below are calculated over a school year)

5 Minutes late each day	3 days lost!
10 Minutes late each day	6.5 days lost!
15 Minutes late each day	10 days lost!
20 Minutes late each day	13 days lost!
30 Minutes late each day	19 days lost!



"In the line for ten to nine!"

Reminder—Packed Lunches

NO NUTS

Can we once again remind parents not to put NUTS or NUT products ie Nutella or hazelnut chocolate spread in their children's packed lunches. We have children with severe allergies. We are a Nut Free School.

Can we also remind pupils to take all their packed lunch waste home with them please, this enables parent's to see what they have eaten and reduces school waste.

Thank You

PTA - Bags to School

Collection for Bags to School will be on Tuesday 26th March, the collection point will be the main school hall. Please bring in before school that morning as storage is short.

Many Thanks from the PTA



Class Assemblies

8th March	3/4H
22nd March	1L
5th April	3/4W
3rd May	1/2S
7th June	2C
27th June	Yr 6 Concert



Pat Turner Trophy



Evie Hindmarch 6P for excellent progress in all her subjects (especially reading) during year 6. Also, we have noticed Evie start to become very mature, funny, kind and always helpful.

Well Done

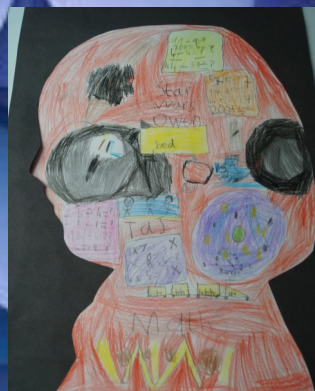
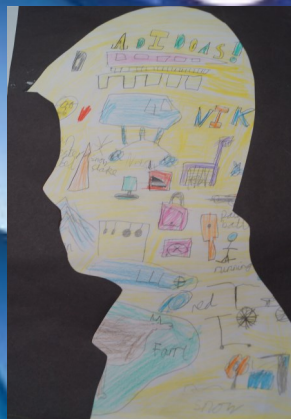
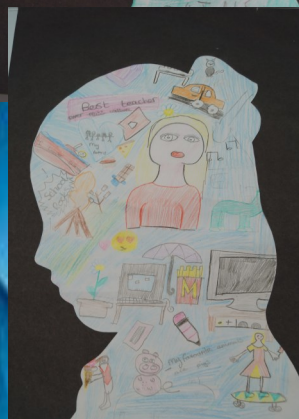
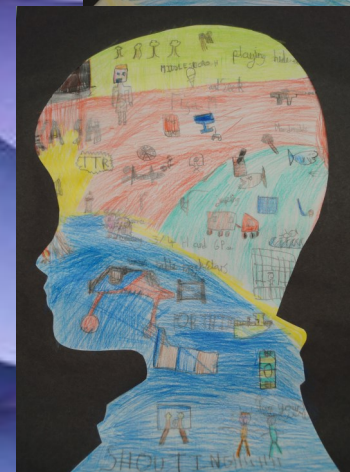
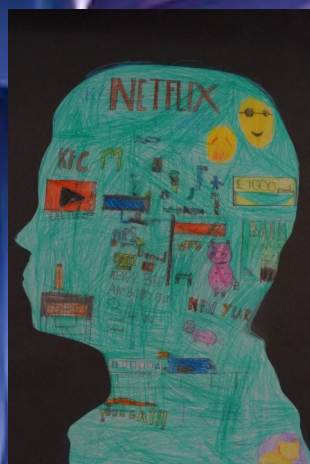
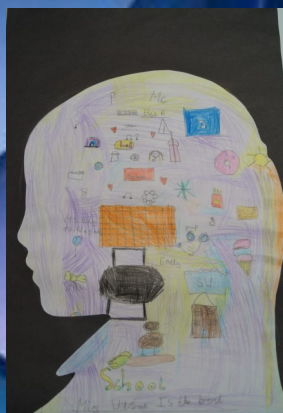
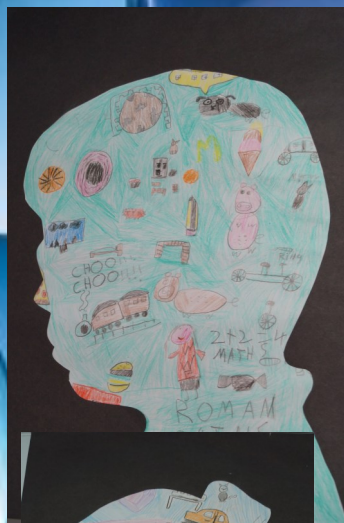
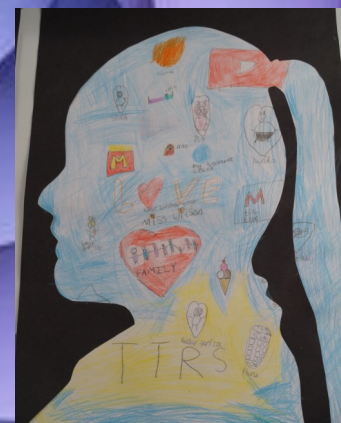
Joshua Mountford 1/2S for a fantastic start to the term. He has worked so hard this week and is a brilliant role model. Well Done !

World Book Day Book Swap was a massive success

3/4A Enjoyed their reading with their dressing gowns !



3/4W Get creative



School Term and Holiday Dates 2019-20

	AUGUST 2019	SEPTEMBER 2019	OCTOBER 2019	NOVEMBER 2019	DECEMBER 2019	JANUARY 2020
Monday	5 12 19 26	2 9 16 23 30	7 14 21 28	4 11 18 25	2 9 16 23 30	6 13 20 27
Tuesday	6 13 20 27	3 10 17 24	8 15 22 29	5 12 19 26	3 10 17 24 31	7 14 21 28
Wednesday	7 14 21 28	4 11 18 25	2 9 16 23 30	6 13 20 27	4 11 18 25	1 8 15 22 29
Thursday	1 8 15 22 29	5 12 19 26	3 10 17 24 31	7 14 21 28	5 12 19 26	2 9 16 23 30
Friday	2 9 16 23 30	6 13 20 27	4 11 18 25	1 8 15 22 29	6 13 20 27	3 10 17 24 31
Saturday	3 10 17 24 31	7 14 21 28	5 12 19 26	2 9 16 23 30	7 14 21 28	4 11 18 25
Sunday	4 11 18 25	1 8 15 22 29	6 13 20 27	3 10 17 24	1 8 15 22 29	5 12 19 26
	FEBRUARY 2020	MARCH 2020	APRIL 2020	MAY 2020	JUNE 2020	JULY 2020
Monday	3 10 17 24	2 9 16 23 30	6 13 20 27	4 11 18 25	1 8 15 22 29	6 13 20 27
Tuesday	4 11 18 25	3 10 17 24 31	7 14 21 28	5 12 19 26	2 9 16 23 30	7 14 21 28
Wednesday	5 12 19 26	4 11 18 25	1 8 15 22 29	6 13 20 27	3 10 17 24	1 8 15 22 29
Thursday	6 13 20 27	5 12 19 26	2 9 16 23 30	7 14 21 28	4 11 18 25	2 9 16 23 30
Friday	7 14 21 28	6 13 20 27	3 10 17 24	1 8 15 22 29	5 12 19 26	3 10 17 24 31
Saturday	1 8 15 22 29	7 14 21 28	4 11 18 25	2 9 16 23 30	6 13 20 27	4 11 18 25
Sunday	2 9 16 23	1 8 15 22 29	5 12 19 26	3 10 17 24 31	7 14 21 28	5 12 19 26

 Bank Holiday
 School Holiday
 Professional development/training days

Pupils must be taught for a minimum of 190 days. The number of term days shown is **192**.
Three recommended professional development (PD) days for teaching staff have also been highlighted;
 Pupils will not attend school on these days.
 Schools will need to identify a further **two** PD days, from the calendar. Please could you send your remaining
two PD days to the Education Office Harrogate via email schoolwelfare@northyorks.gov.uk when you have
 agreed them.